

City Of New Orleans

Steve Goodman

C (G) G7 (D7) C (G)

Rid - in' on the Ci - ty of New Or - leans
Deal - in' cards with the old men in the club car
Night time on the Ci - ty of New Or - leans

Am (Em) F (C) C (G) G7 (D7)

5 Il - li - nois Cen - tral Mon - day mor - ning rail
Pen - ny a point there ain't no one keep - in' score
Chang - in' cars in Mem - phis Ten - ne - see

C (G) G7 (D7) C (G)

9 fif - teen cars and fif - teen rest - less ri - ders three con -
pass the pa - per bag that holds the bot - tle
half way home and we'll be there by morn - ing thru the

Am (Em) G7 (D7) C (G)

13 duc - tors and twen - ty five sacks of mail all a -
feel the wheel rum - blin' thru the floor and the
Mississippi darkness rol - lin' down to the sea but

Am (Em) Em (Bm)

17 long the south bound o - dys - sey the train pulls out of Kan - ka - kee and
sons of Pull man por - ters and the sons of en - gi - neers ride their
all the towns and peo - ple seem to fade in - to a bad dream and the

G (D) D (A)

21 rolls a - long past hous - es farms and fields
fa - ther's ma - gic carpet made of steel
steel rail still ain't heard the news

A m (Em)

Em (Bm)



25 Pass - in' towns_ that have__ no names__ and freight yards__ full of old__
Mo - thers with__ their babes__ a - sleep__ are rock - in' to the
Con - duc - tor sings__ his song__ a - gain__ the pas - sen ____ gers will please__

G (D)

G7 (D7)



28 __ black men__ and the grave yards__ of the rust - ed au - to mo - biles__
gen - tle beat__ and the rhy - thm__ of the rails is all__ they__ feel__
__ re - frain__ this train's got the dis - ap - pear - in' rail__ road__ blues

C (G)

Chorus F (C)

G7 (D7)

C (G)



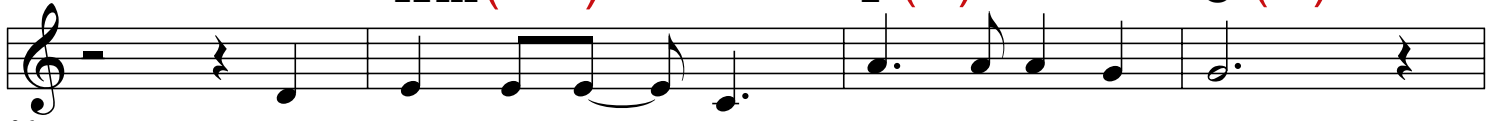
31

Good Mor - ning A - mer - i - ca__ how are__ you
(last time) Good Night etc.

A m (Em)

F (C)

C (G)



36 Say, don't you know__ me I'm your na - tive son

G7 (D7)

C (G)

G7 (D7)

A m (Em)



40 I'm the train they call the Ci - ty of__ New Or__ leans

F (C)

G7 (D7)

C (G)

C (G)



44 I'll be gone five hun - dred miles__ when the day__ is done.